



TEXAS Global
The University of Texas at Austin

HUMAN BIOLOGY ON THE SPANISH COAST

Santander, Spain

Summer I, 2021

FACULTY-LED PROGRAMS
EDUCATION ABROAD
Texas Global



Program Overview

- **Dates**

- Tuesday, May 25 – Saturday, July 3
(6 weeks)

- **Housing & Meals**

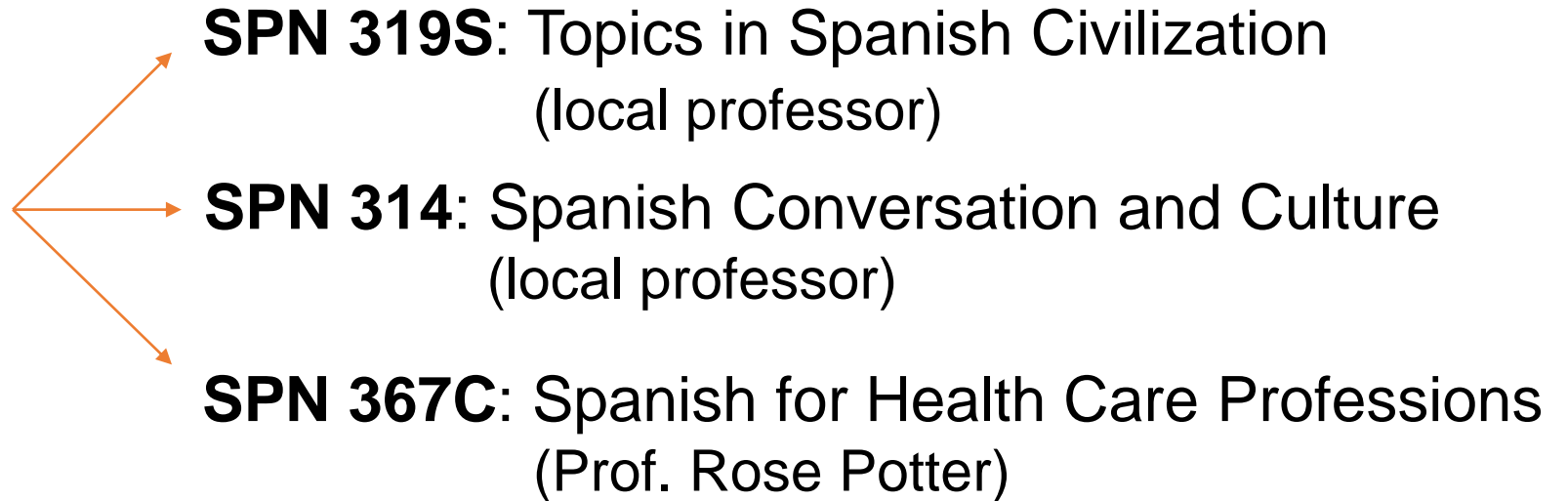
- Homestay families
- 3 meals per day

- **Excursions & Activities**

- Daytrips to Atapuerca, Caves of Cantabria
- Weekend to Madrid

Course Overview & Eligibility

BIO 346: Human Biology
(cross-listed with **ANT 348K**)
Dr. Steve Phelps



- **Credits:** 6-credits received
 - Courses taught by UT professors are in-residence
 - Courses taught by local professors are transfer
- **Flags:** Global Cultures flag

Course Overview & Eligibility

- **Eligibility:**

- No pending disciplinary cases with Dean of Students
- Good academic standing (recommended 2.5+ GPA)
- Pre-requisites:
 - BIO 346 → BIO 325(H) with “C” or better
 - SPN 319S → None
 - SPN 314 → SPN 610D with “C” or better
 - SPN 367C → SPN 327C & 328C with “C” or better
- Consult with academic advisor before applying, and discuss backup plans

Typical Schedule

7:30am-8:00am: Light breakfast with host family

8:30am-9:00am: Walk/take bus to the University of Cantabria

9:15am-11:15am: Class #1

11:15am-11:45am: Break

11:45am-1:45pm: Class #2

1:45pm: Walk/take bus back home

2:30p- 3:30p: Lunch with host family (large 3-course meal)

5-8pm: Optional activity with “monitores”

8-9pm: Light dinner with host family

Applying

- [Self-Authorize](#) to begin application
- Program code: **293085**
- Two 250-word essays:
 - ***How will your participation in this program contribute to your academic & professional growth?***
 - ***Discuss your personal goals for studying abroad and what challenges you anticipate.***
- Faculty or TA reference
- \$75 non-refundable application fee
- Visit [How to Apply](#) for more info!

Deadline: February 15



Estimated Costs

<ul style="list-style-type: none"> BIO 346 + SPN 367C 	<ul style="list-style-type: none"> BIO 346 + SPN 319S BIO 346 + SPN 314
\$75 Application Fee	\$75 Application Fee
\$~1,740 6 hours UT tuition*	\$600 UT Affiliated Studies Fee \$~1,179 3 hours UT tuition*
\$4,200 Program Fee (estimated for 2021) Includes \$500 deposit, on-site orientation, housing, three daily meals, and program excursions	\$4,200 Program Fee (estimated for 2021) Includes \$500 deposit, on-site orientation, housing, three daily meals, and program excursions
\$2,492 Estimated Personal Expenses Includes: Airfare (\$1500), City Transportation (\$200), Food (\$200), Books/Materials (\$50), Personal Items (\$200), Health Insurance (\$184), Passport (\$158)	\$2,492 Estimated Personal Expenses Includes: Airfare (\$1500), City Transportation (\$200), Food (\$200), Books/Materials (\$50), Personal Items (\$200), Health Insurance (\$184), Passport (\$158)
\$~8,507 TOTAL	\$~8,546 TOTAL

***Apply for or renew your [passport](#) now!**

Summer: Financial Timeline

\$75 Application Fee	Charged: After app completion Due: within 10 days
	Non-refundable



\$500 Deposit	Charged: After acceptance Due: March 5
	Refundable, if cancelled



..... **Go/No-Go Decision: March 12, 2021**



Go!



Program Balance	Charged: March 13 Due: April 1
	Refundable, if cancelled



Abroad!



No-Go



Program Cancellation	Deposit and program balance are refunded if program is cancelled
---------------------------------	--

Financial Aid & Scholarships

- [Financial Aid](#)
Federal grants/loans can support you abroad
- [Global Assist](#) - database of UT scholarships
 - International Education Fee Scholarship
Deadline: Feb. 15
 - CNS Human Bio Scholarship
Deadline: Feb. 15
- [Benjamin A. Gilman Scholarship](#)
Pell Grant recipients, scholarships up to \$5,000.
Deadlines: October 6, 2020 & March 2, 2021
- Visit the [Texas Global Funding](#) page for more!





Health, Safety, & COVID-19

- What Texas Global is doing:
 - Monitoring in-country issues
 - Preparing faculty leaders with safety briefings & resources
 - Safety plans focused on COVID for every program
- Take into account your [own personal health](#) and the health of those close to you.
- Visit the [Global Risk & Safety](#) and [COVID-19](#) pages for up-to-date info, resources, FAQs, & videos.

Contact grs@austin.utexas.edu with your health/safety questions and concerns



QUESTIONS?

- **Email:** TXGlobal-FacultyLed@austin.utexas.edu
 - *Always include your EID & program of interest*
- **Review our FAQs for [Maymester](#) and [Summer](#) programs**
- **Join us for live Q&A advising sessions:**
 - Tuesdays at 2pm - <https://utexas.zoom.us/j/94489618267>
 - Fridays at 11am - <https://utexas.zoom.us/j/94298769401>

CONNECT WITH US ON SOCIAL



global.utexas.edu/abroad



[/UTexasAbroad](https://www.facebook.com/UTexasAbroad)



Texas Global | The University
of Texas at Austin



[@texasglobalabroad](https://www.instagram.com/texasglobalabroad)



[@UTexasAbroad](https://twitter.com/UTexasAbroad)



[#TexasGlobal](https://twitter.com/UTexasAbroad)



[/TexasGlobal](https://www.youtube.com/channel/UC...)

HUMAN BIOLOGY ON THE SPANISH COAST

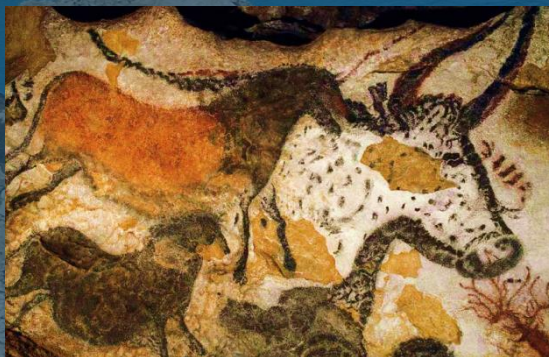
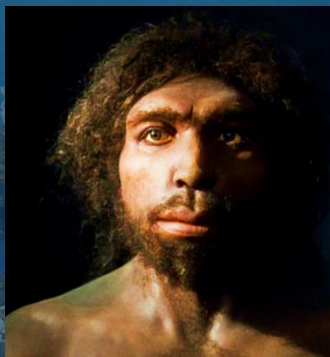
Jean Ooi at TXGlobal-FacultyLed@austin.utexas.edu

Steve Phelps, sphelps@utexas.edu

www.phelpslab.net/study-abroad

utexas.zoom.us/j/92920679440

May 25 – July 3, 2021. Apply by Feb 15.



Info sessions

- Tuesday, Oct 20, 8am
- Wednesday, Nov 4, 4pm
- Monday, Nov 16, 8am
- Monday Nov 16, 5pm

utexas.zoom.us/j/92920679440

HUMAN BIOLOGY ON THE SPANISH COAST

Jean Ooi at jean.ooi@austin.utexas.edu
Steve Phelps, sphelps@mail.utexas.edu
www.phelpslab.net/study-abroad



Santander, Spain

180,000 people

University of Cantabria

Longstanding site for Study Abroad programs

Average high in the month of June: 71°F

HUMAN BIOLOGY ON THE SPANISH COAST

Jean Ooi at jean.ooi@austin.utexas.edu
Steve Phelps, sphelps@mail.utexas.edu
www.phelpslab.net/study-abroad



Santander, Spain

180,000 people
University of Cantabria
Longstanding site for Study Abroad programs
Average high in the month of June: 71°F

HUMAN BIOLOGY ON THE SPANISH COAST

Jean Ooi at jean.ooi@austin.utexas.edu
Steve Phelps, sphelps@mail.utexas.edu
www.phelpslab.net/study-abroad



Santander, Spain

180,000 people
University of Cantabria
Longstanding site for Study Abroad programs
Average high in the month of June: 71°F

HUMAN BIOLOGY ON THE SPANISH COAST

Jean Ooi at jean.ooi@austin.utexas.edu
Steve Phelps, sphelps@mail.utexas.edu
www.phelpslab.net/study-abroad



Battle of Santander & the
Spanish Civil War

Human Biology: Epigenetics, genetics & evolution

BIO 346, ANTH 348K

Upper division biology /anthropology

HUMAN BIOLOGY ON THE SPANISH COAST

Jean Ooi at jean.ooi@austin.utexas.edu
Steve Phelps, sphelps@mail.utexas.edu
www.phelpslab.net/study-abroad



HUMAN BIOLOGY ON THE SPANISH COAST

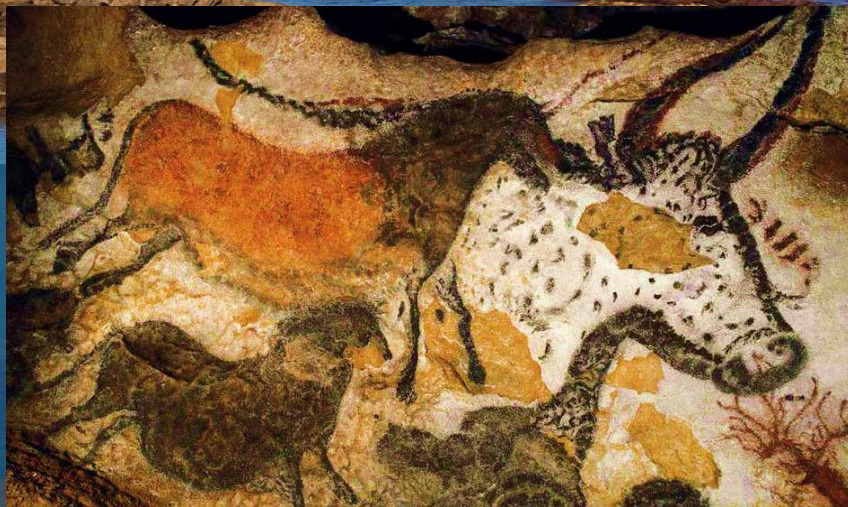
Jean Ooi at jean.ooi@austin.utexas.edu
Steve Phelps, sphelps@mail.utexas.edu
www.phelpslab.net/study-abroad



Human Biology:
Cultural & genetic history of the
Iberian Peninsula

HUMAN BIOLOGY ON THE SPANISH COAST

Jean Ooi at jean.ooi@austin.utexas.edu
Steve Phelps, sphelps@mail.utexas.edu
www.phelpslab.net/study-abroad



Altamira cave

Human Biology:
Caves of Cantabria include 18
UNESCO World Heritage sites
with paleolithic art

HUMAN BIOLOGY ON THE SPANISH COAST

Jean Ooi at jean.ooi@austin.utexas.edu
Steve Phelps, sphelps@mail.utexas.edu
www.phelpslab.net/study-abroad



Homo antecessor

Human Biology:
Atapuerca & the
Museum of Human Evolution

HUMAN BIOLOGY ON THE SPANISH COAST

Jean Ooi at jean.ooi@austin.utexas.edu
Steve Phelps, sphelps@mail.utexas.edu
www.phelpslab.net/study-abroad



Human Biology:
Atapuerca & the
Museum of Human Evolution

HUMAN BIOLOGY ON THE SPANISH COAST

Jean Ooi at jean.ooi@austin.utexas.edu
Steve Phelps, sphelps@mail.utexas.edu
www.phelpslab.net/study-abroad



Human Biology:
Atapuerca & the
Museum of Human Evolution

HUMAN BIOLOGY ON THE SPANISH COAST

Jean Ooi at jean.ooi@austin.utexas.edu
Steve Phelps, sphelps@mail.utexas.edu
www.phelpslab.net/study-abroad



Human Biology:
National Museum of Natural
Sciences, National Museum
of Archaeology

